

Glen Ellyn School District 41

Ignite passion. Inspire excellence. Imagine possibilities.

793 North Main Street, Glen Ellyn, IL 60137



Special Meeting - Facilities

Board of Education

June 15, 2016

Rationale

Why are we focused on facilities?

Phase I is complete. There are a remaining issues to address in Phase II, including:

- 10 portables remain at Hadley
- Lack of space for full-day kindergarten for ALL
- Deficiencies at all school buildings, including limited flexibility and crowded core spaces (hallways, bathrooms, cafeterias, gyms, storage)

Historical Background

1996 - A district Facilities Committee recommended renovations and additions to all schools including wiring technology.

1997 - Voters approved a referendum to make repairs to buildings and construct additions. Spalding School was demolished.

2001 - Portables began arriving into the district.

2003 - Blue Ribbon Committee recommendation was presented to the Board.

2006 - Administration recommended a 5th/6th grade center at Hadley.

2008 - Voters declined a referendum.

2009 - Master Facilities Plan Committee recommendation presented to the Board.

Background - 2013 to Present

- **July 17, 2013** - First BOE facilities discussion with Dr. Gordon giving him direction to start facilities planning that eventually led to Phase I and Phase II
- **November 11, 2013** - Board approved Phase I plan
- **January 22, 2014** - Board approved financing of Phase I plan
- **June 2014** - Phase I construction began
- **October 6, 2014** - Administration presented facilities update and information about facilities Phase II planning to the Board. Board directed full-day kindergarten (FDK) survey and Hadley space utilization study
- **November 10, 2014** - Presentation to the Board recommending the district study space options to support FDK
- **January 26, 2015** - Presentation to the Board to approve exploring solutions
- **January 31 & February 4, 2015** - Community Listening Sessions about FDK
- **February 23, 2015** - Board directed the district to form a community to study facilities options to support FDK and removal of portables at Hadley
- **April 2016** - Community Facilities Task Force Report to the Board
- **May 2016** - The last of the elementary portables were removed.

Why full-day kindergarten for all students?

Enhance Student Achievement - Data demonstrates that children in full-day classes show greater reading and mathematics achievement gains than those in half-day classes.

Improves Social Emotional Skills - Full day of learning offers more time to focus on activities, to reflect on activities and to transition between activities.

Solid Financial Investment - Research shows funds invested in quality early education program produce powerful returns on investment.

Teacher Preferred - Teachers get to know students better and are able to better understand their needs and meet those needs.

Parents Preferred- Comparison studies demonstrate that parents prefer full-day kindergarten. Full-day kindergarten is already offered in many surrounding districts and private schools.

Why remove portables at Hadley?

Safety

Disconnected from rest of school

Instructional time lost

Temporary structures

Enrollment

- Data confirms that enrollment has remained stable over the past decade
- Consistent enrollment between 3,500 - 3,600
- Fluctuating year by year by less than 100 students

What deficiencies remain?

- Lack of space to offer full-day kindergarten to all
- Portables remain at Hadley
- Lack of flexible space
- Crowded core spaces (bathrooms, hallways, cafeterias, storage)
- Not all programming/services are accessible due to location

Solutions

Community Facilities Task Force

Elementary Recommendation

- Modify existing buildings
- Address building deficiencies

Hadley Junior High Recommendation

- Ten new classrooms
 - 12 optional
- A multipurpose room for cafeteria and auditorium space
- Remodel pods

Administration's Recommendation

New Building for Early Learning Center on District 41 Property

- Full-day kindergarten for all students and other early learning in one location
- Designed specifically for unique needs of younger children
- Relieve core spaces and provide flexibility by reducing school size at all elementary buildings by approximately 100 students
- Address deficiencies by using new available space more efficiently
- No loss of green space

Task Force Hadley Junior High Recommendation

- Remove portables
- 10 (or 12) new classrooms
- Create multipurpose space for cafeteria and auditorium combination
- Address deficiencies by enlarging cafeteria space and creating a space for performances/events
- Remodel the pods
- Glencoe bus lane, etc...

Board Direction

- Offer full-day kindergarten for all students?
- Replace portables at Hadley?

Full Day Kindergarten for All

Yes

No

Add to
Elementary
Buildings

New Building
@ Spalding

For Some

K-5

ELC

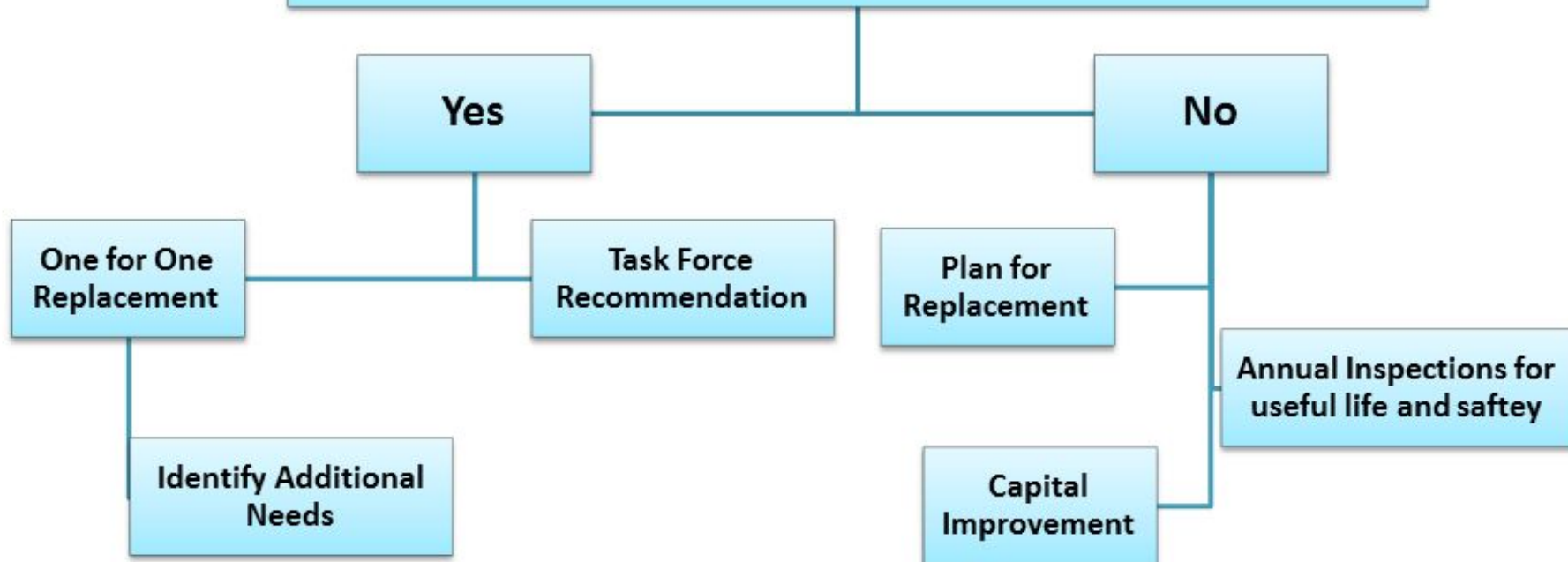
Yes

No

Identify
Available Space

Ongoing Capital
Improvements

Remove Portables at Hadley



Children are at the heart of all decisions.

- Board direction
- Board action - Costs
 - Green Associates
 - Brainspaces
 - School Perceptions
- Community survey
- Finance planning to support Board direction