

Share:

Tweet

-
-
-
-

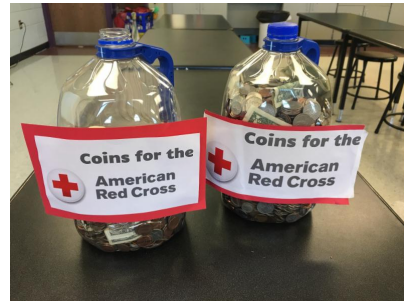


District Digest

from Glen Ellyn School District 41

Churchill Student Coin Drive for Disaster Relief

For two weeks in September, Churchill School collected coins for the American Red Cross to help with disaster relief efforts. Students from last year's Student Leadership Team helped make announcements in the mornings to help promote this collection. The students raised \$549.24.



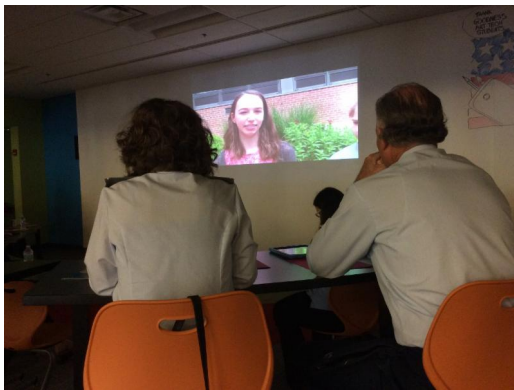
Thank you to everyone who participated.

Problem-Based Learning Community Networking Breakfast

Superintendent Paul Gordon, Hadley Principal Steve Diveley and Problem-Based Learning Coach John Bower hosted a networking event for current and potential new partners to work with our students and teachers through Problem-Based Learning. Attendees were given a thorough overview of the educational program, a viewing of a video showcasing the collaboration between students and community partners, as well as networking time to make connections with other D41 partners and organizations.



To learn more about District 41 Problem-Based Learning or if you are interested in becoming a community partner visit www.d41.org/pbl. Watch the PBL Celebration video [here](#).



Hadley Orchestra to Perform at String Fest

The Hadley String Orchestra will be performing with Glencrest, Marquardt and Westlake Middle School's for a joint concert on Thursday, October 19, 2017 at Glenbard East High School at 7:30pm entitled String Fest. Glenbard West, East and South High Schools will be performing on the same performance that evening. All three high school directors will be working with the junior high performers. It will be a marvelous night with hundreds of string players performing. This thrilling performance is open to the public! Please contact [Ms. Georgia Alemis](#), Hadley Orchestra Director, for more details.



Winter Outerwear is Needed For District 41 Families

Winter is coming! Midwest winters are notorious and some families are in need of warm coats, snow pants, boots, waterproof gloves. Many families move here unaware and/or unprepared for the cold weather. Please consider donating new or gently used items to Community Outreach. If you have ski vests or light fleece jackets please donate those items to [Family Tree Resale](#) in Wheaton.

Let's keep all our kids comfortable walking to and from school and give all kids a chance to enjoy the cold weather in warmth!

Halloween Costumes

Halloween will be here soon! If you have any costumes your children have outgrown, please consider donating them to the bins in your school lobby. New or gently used non-violent themed costumes are always needed for children in grades K-5.

Thank you for helping to make Halloween special for all our students who wish to dress up!



STAY CONNECTED WITH DISTRICT 41 ON FACEBOOK AND TWITTER



*“Children are at the heart
of all decisions.”*

Glen Ellyn School District 41

Ignite passion. Inspire excellence. Imagine possibilities.



Confirm that you like this.

Click the "Like" button.