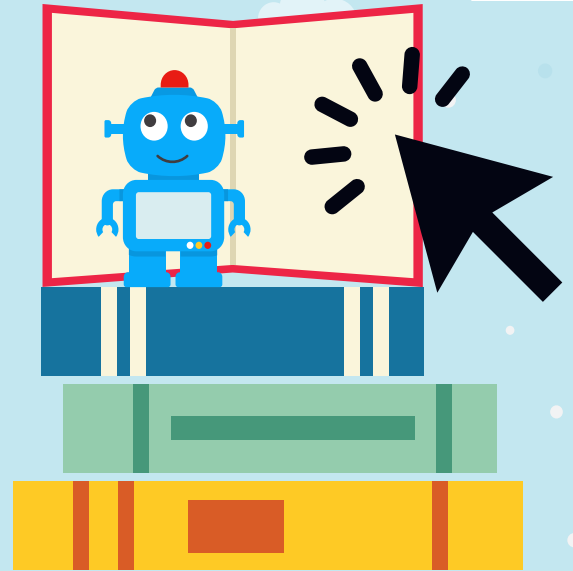


# Learn & Play



## REMOTE LEARNING DAY CAMP

Glen Ellyn Park District and B.R. Ryall YMCA have partnered to offer Learn & Play, a new remote learning day camp for children entering 1st through 5th grade. The program is designed to provide a safe and fun environment conducive to self-guided learning for children that need all-day care. Outdoor activities, games, and crafts will also be part of the experience.



### REGISTRATION

**Space is limited and families should register only at their preferred location.**

Registration will open at 10am on August 12 at [gepark.org/register](http://gepark.org/register) for the Glen Ellyn Park District location. For detailed instructions on how to register for the B.R. Ryall YMCA location, please visit [brryallymca.org](http://brryallymca.org). The program will begin on Monday, August 24.

#### Two Locations:

Lake Ellyn Boathouse, 645 Lenox Road  
B.R. Ryall YMCA, 49 Deicke Drive

#### Program Hours:

7:30 a.m. to 5:30 p.m. Monday-Friday

#### Program Fees:

\$840 per month (*registrants will pay monthly*)

### WHAT TO BRING

Students must arrive with all supplies needed for their schoolwork including their D41 Chromebook, headphones, pencils, etc. Each student must also bring a lunch, snack, and water bottle daily. Wi-Fi access will be available. Staff will help children with connecting to the internet but are not school educators or tutors. Families will receive more in-depth details on Learn & Play by August 19.

### SAFETY MEASURES

The Learn & Play program will follow federal, state, and local guidelines regarding COVID-19 for employees and children.

### QUESTIONS

**GE Park District:** Jeannie Robinson at [jrobinson@gepark.org](mailto:jrobinson@gepark.org)

**YMCA:** Erin White at [ewhite@ryallymca.org](mailto:ewhite@ryallymca.org)

