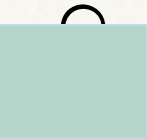
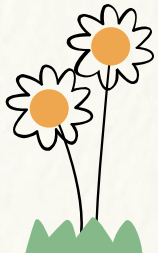




Tonight's Update



- Update on IDPH and ISBE Information
- Update on Remote Learning Work Group
- COW Structure
- Learning 2025 (AASA)

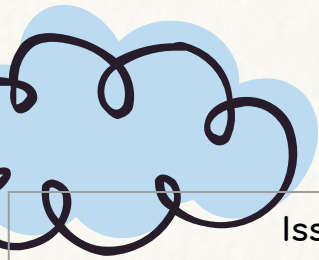




ISBE & IDPH

- ❑ On Friday (6/11) Katie Adduci and I had the opportunity to meet directly with representatives from ISBE, IDPH and Shield Illinois to ask questions and voice our concerns about the ongoing misalignment between their directives and the science connected to COVID 19. (Quick summary of conversation)
- ❑ I am very proud of the assertive advocacy that D41 administration as well as Board President Bruno have been engaged in with the hope of having as “typical” of a school year as possible. It is important that we continue these efforts to get resolution that is timely AND well-informed.

Examples of the Misalignment

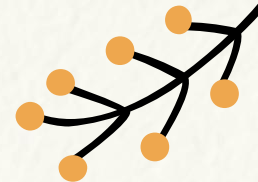


Issue	Contradiction	Impact
Within 6 feet remains the definition for a close contact	3 feet has been deemed safe for social distancing	Exponentially increases the number of close contacts and required quarantines
6 feet distancing at lunch is still in place	3 feet has been deemed safe for classrooms	Not a sustainable lunch model for schools due to space and staffing limitations
*New IDPH quarantine exception-if a district is conducting weekly COVID testing and masking, quarantine is only required for those less than 3 feet distanced from a positive case	This new exception only applies in classrooms (not lunchrooms and not on buses).	This basically forces a district to conduct weekly COVID testing if they want to use the exception. This is inconsistent with the science and seems very incongruent in light of the fact that we are entering Phase 5, community transmission is low and these rules do not apply outside of school (where we know transmission is rare).



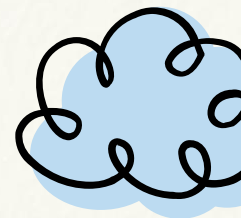


Remote Learning Group Update



Our GEEA collaboration group is meeting again on 6/21. It is our hope that we receive the directives from ISBE that have been promised.

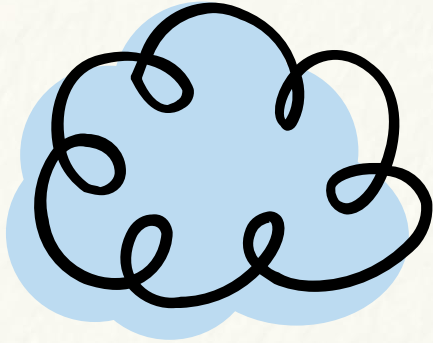
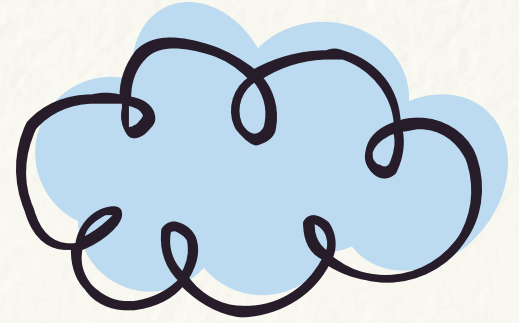
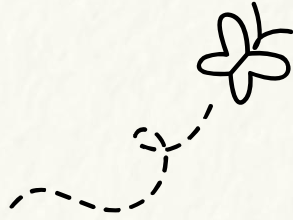
It is important to note that ISBE has put significant restrictions on eligibility for remote learning requests.



Ineligible for the Vaccine & Under a Mandated Quarantine

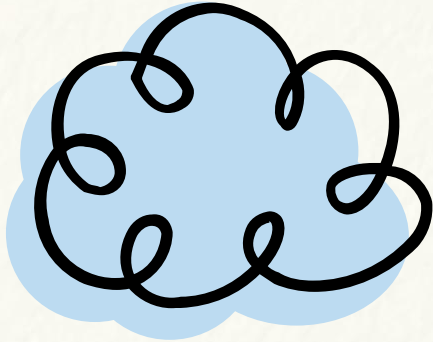
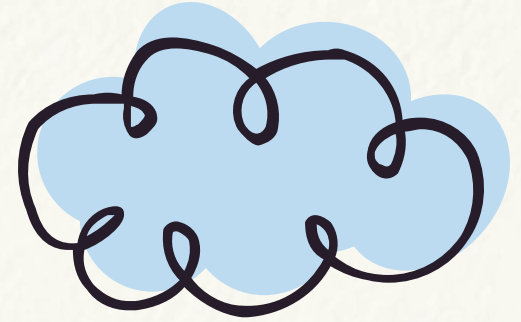
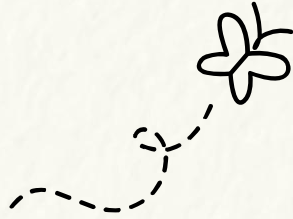
(other requests for remote learning due to a student's medical condition should be addressed through our policy on Homebound Instruction)





Committee of the Whole
(COW)





Committee of the Whole (COW)

Next Step:

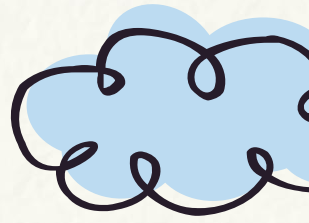
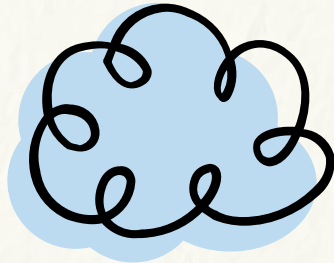
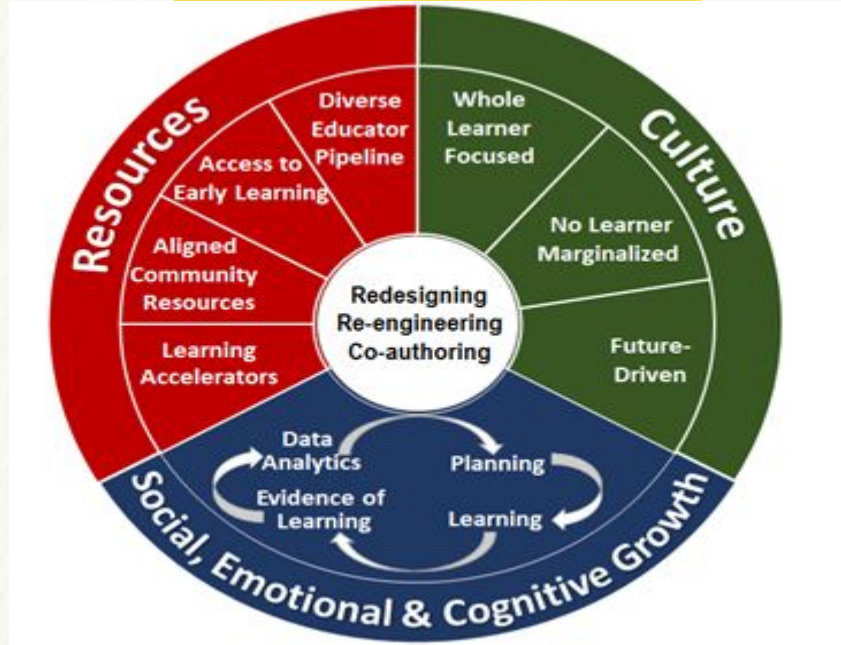
- Prepare a brochure for the community about COW (website, direct email blasts and social media)





LEARNING 2025: STUDENT-CENTERED, EQUITY-FOCUSED EDUCATION

Learning 2025: Student-Centered, Equity-Focused Education is an AASA initiative that calls for holistic redesign of the public school system by 2025. The initiative is grounded in the foundational work of the [AASA Learning 2025 National Commission](#), comprised of thought leaders in education, business, community and philanthropy.

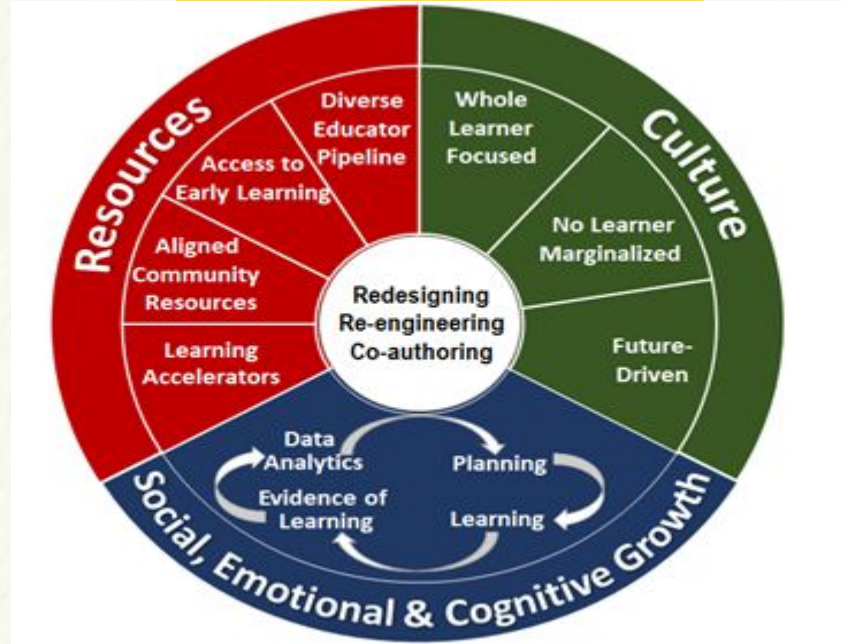
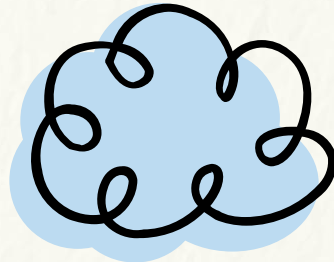




LEARNING 2025: STUDENT-CENTERED, EQUITY-FOCUSED EDUCATION

By applying to be a Demonstration District, we have the opportunity to:

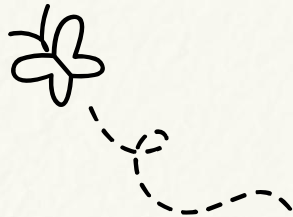
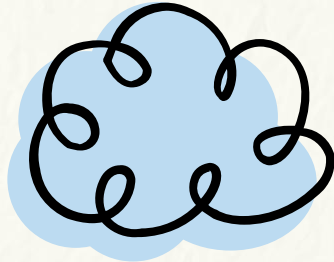
- ❑ Work and receive support on a national level to achieve Lighthouse status through the National School Superintendents Association
- ❑ Network with other districts who are doing this work
- ❑ Work smarter by utilizing a process and timeline that is driven by research-this becomes the “HOW” for our Strategic Plan



AASA's Commitment to Demonstration Sites



LEARNING 2025:
STUDENT-CENTERED, EQUITY-FOCUSED EDUCATION





LEARNING 2025: STUDENT-CENTERED, EQUITY-FOCUSED EDUCATION

Next Steps:

While we wait to hear if we are selected, I encourage the Board to review the links that I have already shared with you.

If selected, I will invite someone from AASA to speak with us

