

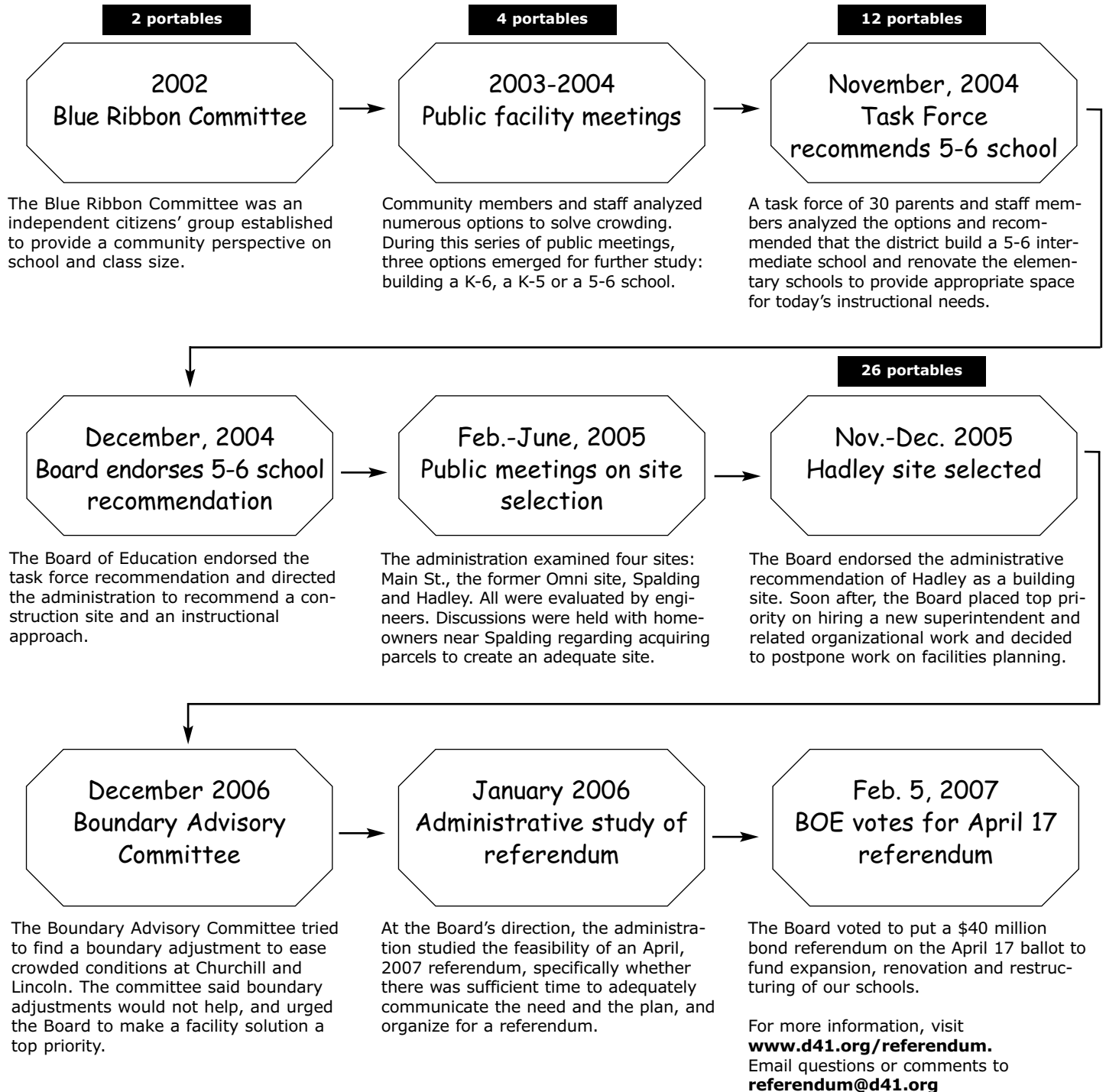


2007 REFERENDUM FACT SHEET

Fact Sheet # 5: Timeline of the facility plan and referendum decision process

3/9/07

The decision to go to referendum is the outcome of a process that began in 2002. The referendum is a \$40 million bond referendum to finance expansion, renovation and restructuring of our schools. Below is a depiction of the decision process over time, a process that was communicated through multiple channels and is documented on www.d41.org/referendum.



For more info on site selection, please turn the page

**ALTERNATIVES TO THE HADLEY SITE THAT WERE ALSO CONSIDERED**

Between 2004, when the facilities task force recommended the district establish a 5-6 school, and November of 2005, when the administration recommended Hadley as the building site, a number of sites and concepts were considered, including a number that would have involved collaboration between the district and park district. The district was looking for a site that could accommodate an approximately 40-classroom school.

Ackerman Park. District and Park District officials discussed the possibility of using or acquiring part of this park as a school location. This plan would have required acquisition of privately-owned parcels. Test fits of a school on the site were created. The Park District told the district it did not wish to pursue a plan involving Ackerman.

Main Street. This small school was purchased by the Glen Ellyn Park District in 1982. Engineers evaluated the 13 classroom-building and found it would require more than \$4 million in renovations to meet today's school code, and the structure would have been too small. Officials also discussed the possibility of some sort of shared use. Questions of which students would be assigned to this site and how the district would provide required services such as English as a New Language, Special Education, Physical and Occupational Therapy and others made the site seem impractical and expensive for a limited value. The district also investigated building two 5-6 schools, one at Spalding and one at Main St. The district felt that the construction and operational expenses of such an approach were not a fiscally responsible plan to put before taxpayers. In 2006, the park district passed a referendum and plans to renovate the building for its own use.

Omni: This "big Box" structure in the northwest corner of the district was available for a limited time and the district architects reviewed its suitability. The property was withdrawn from the market. Even so, the overall space provided by the structure might have been adequate, but a school in a strip mall on two major arterials with no green space that would require busing of every student was not seen as optimal.

Adding on to all five schools. The district also looked into adding on substantially to the elementary schools, including adding a story. The elementary schools are already on smaller sites than Illinois State Board of Education standards recommend. Our architects advised us that adding a story is expensive, difficult to do in a functioning school and, due to the need for stairs and elevators (to comply with the Americans with Disabilities Act), an inefficient use of space. To significantly enlarge the elementary schools regardless of configuration would increase demands on the campus and its environs, and on core areas like libraries, gyms, bathrooms and parking.

Spalding. The vacant 4.7-acre Spalding site in the northeast section of the district was once the location of a small elementary school (the 6-acre Forest Glen site is the next smallest site in the district). District architects developed test fits of two and three story structures depicting a school of the size needed. The test fits illustrated inadequate space for play areas and parking, and poor bus access. The district explored acquisition of adjacent properties to create an adequate site, but the property owners did not welcome this idea. There is a 2.3-acre parcel owned by the park district adjacent to the site; the parcel is in a floodplain which complicates potential use for building or parking. Most students would need to be bused to Spalding, due to the absence of sidewalks and the fact that many would have to cross major roads to get to the site.