



Glen Ellyn SD 41
Four Elementary School Additions
Project Status Report
12/8/2014

WORK RECAP

The following recaps the activities that occurred over the last 30 days at each location:

Franklin Elementary: Work over the last 30 days included completion of MEP rough in, startup of HVAC equipment, completion of exterior glass & glazing, completion of site concrete, completion phase 1 asphalt paving and the installation of drywall partitions. Construction traffic continues to be routed to the temporary west access road and no incidents occurred and not complaints have been received. Street cleaning continues on a weekly basis at a minimum and more frequently if required by conditions.

Lincoln Elementary: Work at Lincoln included the completion of site utilities and site paving, repair of damaged asphalt, installation fire protection trim, electrical trim, HVAC trim, the completion of acoustical ceiling grid, installation of casework, and installation of VCT flooring.

Forest Glen Elementary: Masonry bearing walls and the associated MEP rough in work was completed as allowed by weather conditions.

Churchill Elementary: Site demolition and preparation was completed. The building pad fill was completed and made ready for concrete footings and foundation. Concrete footing installation was begun.

Finally, processing and review of shop drawings, submittals, & RFI's is ongoing. Communication between the District, FGM and FQC is good and project level cooperation is going well. Owner / Arch / CM coordination meetings continue to occur formally on a weekly basis as do CM / Trade Contractor meetings.



WORK OUTLOOK

Work to be completed over the next 30 days at each location is projected as follows:

Franklin Elementary: The project will be substantially complete with the next 30 days. This includes interior finishes and MEP systems. An occupancy inspection from the ROE is scheduled for 12/17/2014. The inspection will be followed by set up of the classrooms by SD 41 and trade contractor punchlist work.

Lincoln Elementary: Similar to Franklin, the project will be substantially complete with the next 30 days. This includes interior finishes and MEP systems. An occupancy inspection from the ROE is scheduled for 12/17/2014. The inspection will be followed by set up of the classrooms by SD 41 and trade contractor punchlist work.

Forest Glen Elementary: Work will include masonry bearing walls for preparation of steel. Work will occur weather when weather conditions allow.

Churchill Elementary: As allowable by weather conditions work on concrete footings and foundations will continue.

FQC onsite personnel and office personnel will continue management of ongoing work onsite and coordination of future work items.

CONTRACTING/BIDDING

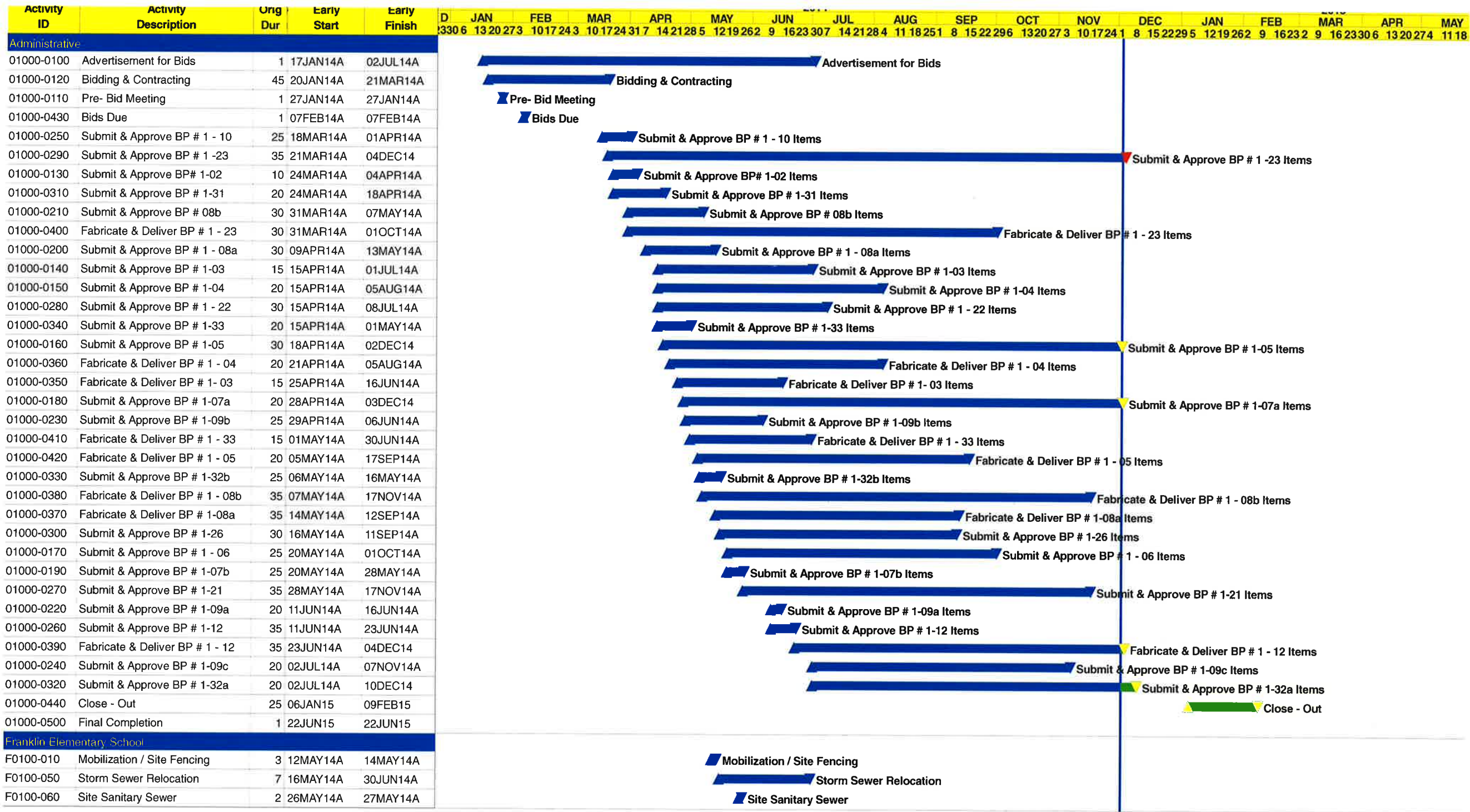
All major trade packages have been publicly bid and awarded by the Board.

PROJECT SCHEDULE/BUDGET

An updated project schedule for Franklin and Lincoln is attached. Both project schedules have been updated to reflect progress to date and to expand the work week from 5 days to 6. The increased work days along with re-sequencing of slab on grade work and compression of work durations is maintaining substantial completion dates prior to the winter break of this year. This is critical to allow staff to have the appropriate time move in and set up time to allow for student occupancy in January.

Meeting or exceeding the schedule dates attached still requires the selective use of premium time work at one or both of the project sites. FQC will monitor this situation and attempt to minimize the cost impact of premium time while still maintain the project completion dates. Costs for premium time were anticipated in the project budget.

Overall costs for the project remain within budget and the budget continues to contain contingency funds for unforeseen conditions.



Project Start	26DEC13		Early Bar
Project Finish	22JUN15		Progress Bar
Data Date	03DEC14		Critical Activity
Run Date	03DEC14		




LINC

Glen Ellyn S.D. # 41
 Lincoln - Franklin - Forest Glen
 Project Schedule Updated 12/3/2014

Sheet 1 of 5



Activity ID	Activity Description	Orig Dur	Early Start	Early Finish	D	JAN	FEB	MAR	APR	MAY	JUN	JUL	AUG	SEP	OCT	NOV	DEC	JAN	FEB	MAR	APR	MAY	
F0100-070	Excavation for Structures	8	05JUN14A	29AUG14A	3306	1320273	1017243	1017243	1724317	1421285	1219262	91623307	1421284	1118251	81522296	1320273	1017241	81522295	1219262	916232	91623306	1320274	1118
F0100-730	Electrical Rough IN - Building	5	13JUN14A	04JUL14A																			
F0100-020	Temporary Partitions / Corridors	4	18JUN14A	23JUN14A																			
F0100-030	MEP Disconnect & Make - Safe	2	18JUN14A	19JUN14A																			
F0100-520	Fire Protection Express Main	3	18JUN14A	25JUL14A																			
F0100-150	Selective Demolition	5	20JUN14A	02JUL14A																			
F0100-040	West Access Rd.	5	02JUL14A	15AUG14A																			
F0100-090	CIP Concrete Foundations /	10	03JUL14A	20SEP14A																			
F0100-750	RFI # R10 - Storm Sewer /	1	14JUL14A	22AUG14A																			
F0100-240	Masonry Bearing - East Wall	7	30JUL14A	04AUG14A																			
F0100-220	Masonry Bearing & Veneer North	5	04AUG14A	16SEP14A																			
F0100-660	Electrical Rough IN - Conduit	26	11AUG14A	04NOV14A																			
F0100-100	Foundation Waterproofing	4	11AUG14A	26AUG14A																			
F0100-110	Foundation Drainage	2	11AUG14A	15AUG14A																			
F0100-120	Foundation Backfill	2	15AUG14A	31OCT14A																			
F0100-210	Masonry Bearing - North Wall of	5	18AUG14A	22AUG14A																			
F0100-300	Masonry Bearing & Veneer West	8	18AUG14A	22SEP14A																			
F0100-200	Masonry Bearing South Wall of	5	19AUG14A	25AUG14A																			
F0100-260	Masonry Bearing & Veneer Rms	8	27AUG14A	03OCT14A																			
F0100-080	Interior Underground Plumbing	4	03SEP14A	08SEP14A																			
F0100-230	Masonry Bearing - North Wall of	3	17SEP14A	19SEP14A																			
F0100-250	Masonry Bearing - South Wall -	3	22SEP14A	24SEP14A																			
F0100-140	CIP Concrete - Slab on Grade	3	29SEP14A	30SEP14A																			
F0100-270	Structural Steel Floor / Roof	4	01OCT14A	08OCT14A																			
F0100-280	Floor / & Roof Decking	3	01OCT14A	08OCT14A																			
F0100-290	Roof Curbs & Roof Blocking	4	07OCT14A	10OCT14A																			
F0100-380	Hollow Metal Door / Borrowed	4	08OCT14A	11OCT14A																			
F0100-180	Site Concrete - North Courtyard	3	09OCT14A	11OCT14A																			
F0100-320	Modified Roofing System	7	13OCT14A	20OCT14A																			
F0100-130	CIP Concrete - Courtyard Stairs	1	14OCT14A	14OCT14A																			
F0100-310	Pre-Fabricated Skylights	3	21OCT14A	24NOV14A																			
F0100-340	Aluminum Curtain Wall - North	4	21OCT14A	07NOV14A																			
F0100-390	HVAC Sheet Metal Rough IN -	3	21OCT14A	23OCT14A																			
F0100-410	HVAC Sheet Metal Rough IN -	2	21OCT14A	22OCT14A																			
F0100-400	HVAC Sheet Metal Rough IN	10	24OCT14A	04NOV14A																			
F0100-530	Fire Protection Rough IN	8	27OCT14A	21NOV14A																			
F0100-430	HVAC Rough IN - TC	8	27OCT14A	11NOV14A																			
F0100-720	Electrical Trim - Power for	4	27OCT14A	11NOV14A																			
F0100-670	Electrical Rough IN - Wiring	15	28OCT14A	21NOV14A																			
F0100-360	Aluminum Curtain Wall - South	5	29OCT14A	21NOV14A																			
F0100-470	Plumbing Rough IN - Waste,	5	29OCT14A	24NOV14A																			

Project Start	26DEC13		Early Bar
Project Finish	22JUN15		Progress Bar
Data Date	03DEC14		Critical Activity
Run Date	03DEC14		

LINC

Sheet 2 of 5

Glen Ellyn S.D. # 41
 Lincoln - Franklin - Forest Glen
 Project Schedule Updated 12/3/2014

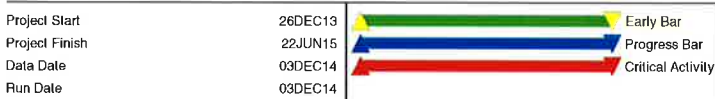
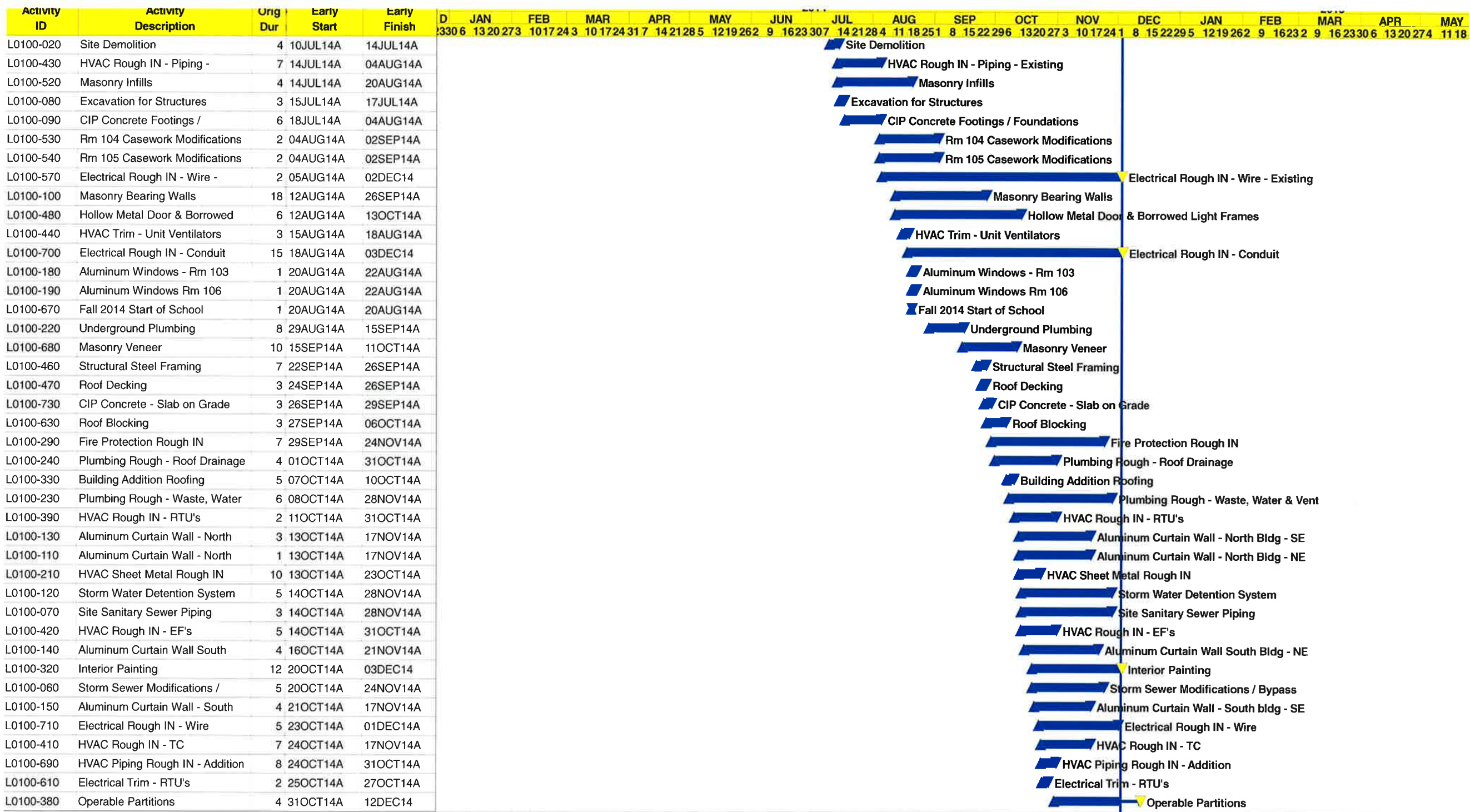


Activity ID	Activity Description	Orig Dur	Early Start	Early Finish	D	JAN	FEB	MAR	APR	MAY	JUN	JUL	AUG	SEP	OCT	NOV	DEC	JAN	FEB	MAR	APR	MAY	
F0100-500	Gypsum Board Soffits / Ceilings	7	30OCT14A	28NOV14A																			
F0100-190	Site Concrete - South Courtyard	4	17NOV14A	25NOV14A																			
F0100-160	CIP Concrete - Interior Stairs	3	05NOV14A	07NOV14A																			
F0100-460	Plumbing Rough IN - Roof	5	05NOV14A	10NOV14A																			
F0100-350	Aluminum Storefront - West	2	24NOV14A	28NOV14A																			
F0100-330	Roof Related Sheet Metal	8	07NOV14A	05DEC14																			
F0100-620	Interior Painting	10	08NOV14A	04DEC14																			
F0100-590	Misc. Metal Stair Railings	5	03DEC14	08DEC14																			
F0100-440	HVAC Trim - TC	5	12NOV14A	17NOV14A																			
F0100-680	Electrical Trim - Lighting	8	13NOV14A	10DEC14																			
F0100-640	Asphalt Paving - Phase I	4	13NOV14A	17NOV14A																			
F0100-550	Acoustical Ceiling Grid	7	24NOV14A	06DEC14																			
F0100-510	Classroom Casework	6	24NOV14A	08DEC14																			
F0100-690	Electrical Trim - Power	6	20NOV14A	06DEC14																			
F0100-580	Misc. Interior Glazing	3	05DEC14	08DEC14																			
F0100-420	HVAC Sheet Metal Trim	6	22NOV14A	08DEC14																			
F0100-480	Plumbing Fixture Trim	5	09DEC14	13DEC14																			
F0100-540	Fire Protection Trim	5	08DEC14	10DEC14																			
F0100-630	Corridor Storage Cubbies	5	08DEC14	12DEC14																			
F0100-710	Electrical Trim - Low Voltage	6	08DEC14	13DEC14																			
F0100-700	Electrical Trim - FA	4	08DEC14	11DEC14																			
F0100-490	Resilient Flooring & Accessories	8	01DEC14A	15DEC14																			
F0100-560	Acoustical Ceiling Tile	5	11DEC14	16DEC14																			
F0100-370	Aluminum Entrances Rm C301,	3	24NOV14A	28NOV14A																			
F0100-570	Interior Doors & Finish Hardware	3	16DEC14	18DEC14																			
F0100-600	Operable Partitions	4	17NOV14A	18DEC14																			
F0100-610	Visual Display Boards	2	16DEC14	17DEC14																			
F0100-450	HVAC Test & Balance	3	01DEC14A	18DEC14																			
01000-0480	Substantial Completion	1	19DEC14	19DEC14																			
01000-0490	Punchlist	9	22DEC14	01JAN15																			
F0100-740	Asphalt Paving - Phase II	5	04JUN15	10JUN15																			
F0100-650	Landscape Restoration	7	11JUN15	19JUN15																			

Lincoln Elementary School

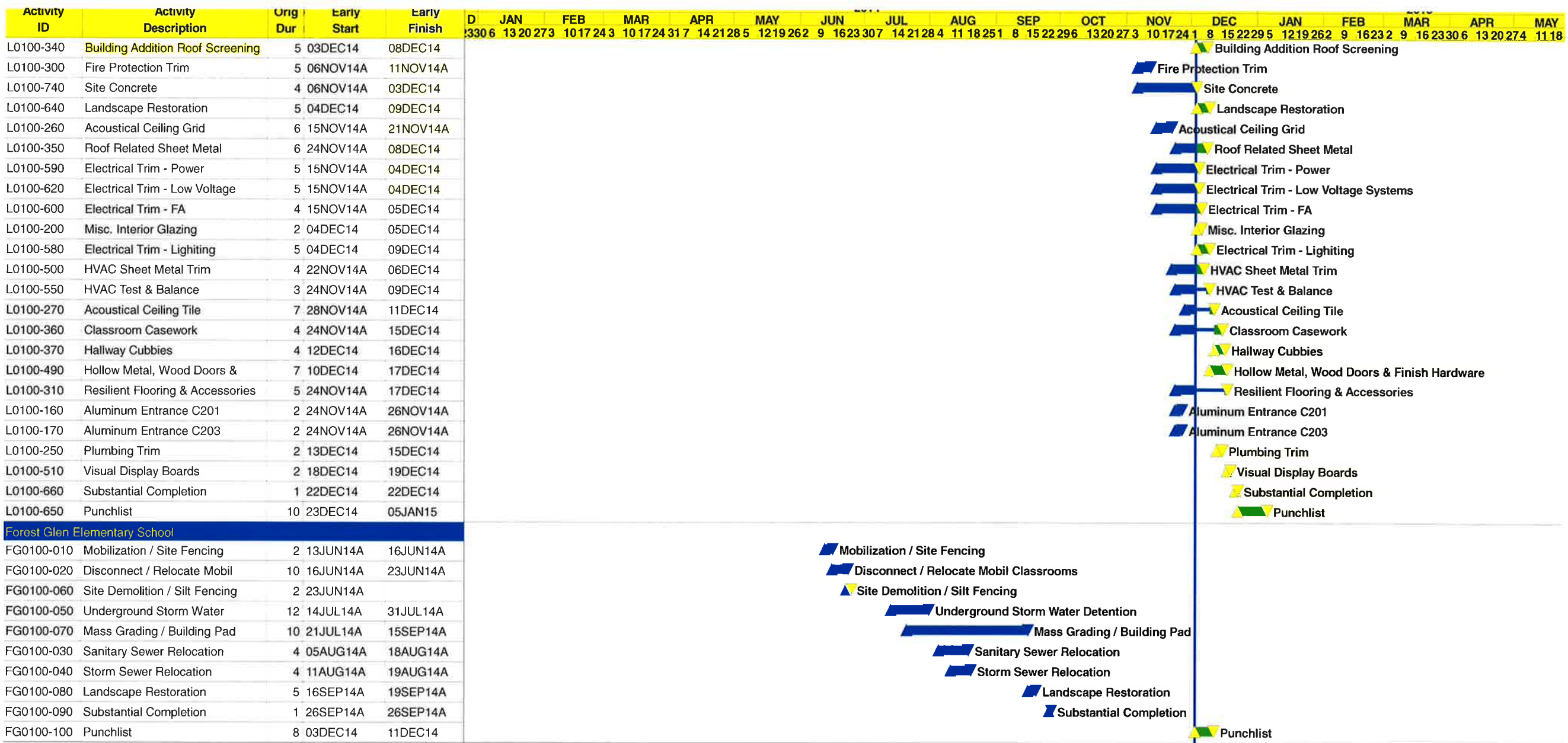
L0100-010	Mobilization / Site Fencing	2	06JUN14A	09JUN14A																			
L0100-400	Disconnect / Relocate Mobil	10	06JUN14A	19JUN14A																			
L0100-050	MEP Disconnect & Make - Safe	2	10JUN14A	11JUN14A																			
L0100-030	Selective Demolition	5	19JUN14A	02JUL14A																			
L0100-040	Temporary Partitions / Corridors	10	02JUL14A	04AUG14A																			
L0100-280	Fire Protection Express Mains	5	02JUL14A	08JUL14A																			
L0100-450	HVAC Rough IN - HWS / HWR	8	02JUL14A	04AUG14A																			
L0100-560	Electrical Rough IN - Conduits -	5	02JUL14A	31JUL14A																			

Project Start	26DEC13		Early Bar
Project Finish	22JUN15		Progress Bar
Data Date	03DEC14		Critical Activity
Run Date	03DEC14		



LINC





Project Start	26DEC13		Early Bar
Project Finish	22JUN15		Progress Bar
Data Date	03DEC14		Critical Activity
Run Date	03DEC14		

LINC

