



Glen Ellyn SD 41  
Four Elementary School Additions  
Project Status Report  
08/06/2014

**WORK RECAP**

The following recaps the activities that occurred over the last 30 days at each location:

**Franklin Elementary:** The primary activity that occurred over the last 30 days was cast in place concrete footings and foundations. These activities were coordinated with foundation drainage, waterproofing and removal of stockpiled soil from the site. As of the current date the north courtyard retaining wall was also poured. Coordination with a Village-owned sewer at the south retaining wall required additional design input and has contributed to a delay in the completion of excavation for structural work and subsequently cast in place retaining walls. The west access road was installed including stone work and fencing. This road will go into use August 15, 2014.

Work inside the building progressed with modifications in areas adjacent to the addition to accommodate mechanical/electrical connections as well as emergency exiting. This work is being completed as the building is being made available for teachers to return. Final secondary emergency exiting from the gym will be in place prior to start of school.

**Lincoln Elementary:** Work at Lincoln focused on three areas: portables, interior modifications in areas adjacent to the additions and work for the additions. The work at the portables is complete, including relocation, utilities, ramps and canopy. The District has begun move in and FGM is applying for occupancy to the ROE. Interior modifications progressed with areas turned over to the District for cleaning as completed. As of the Board Meeting date, all areas inside the building will be available for District use. Work on the addition including final AT&T relocation, excavation for foundations and concrete pours for footings and foundations.

Finally, re-roofing work is taking place with this work scheduled to be substantially complete by August 11.

**Forest Glen Elementary:** Work at Forest Glen included final installation of the trailers and coordination with IMS on ramps, stairs and canopy. Underground stormwater detention work took place, including excavation and installation of underground piping and backfill. Water main relocation in the area of the building addition was completed in advance of the start of mass grading for the building pad.

**Churchill Elementary:** Work at Churchill consisted of mass grading for site development of the hard surface playground, mass grading of the site and excavation for the underground stormwater detention system. Underground storm water utility work was installed.

Processing and review of shop drawings, submittals, & RFI's is ongoing. Communication between the District, FGM and FQC is good and project level cooperation is going well. Owner / Arch / CM coordination meetings occur formally on a weekly basis. CM / Trade Contractor meetings also occur formally on a weekly basis.



## **WORK OUTLOOK**

Work to be completed over the next 30 days at each location is projected as follows:

**Franklin Elementary:** Work will progress on the additions with final concrete pours and the start of masonry bearing. The south retaining wall excavation and concrete pour will occur following the resolution of the Village sewer line relocation. Underground utilities within the addition will begin.

**Lincoln Elementary:** Work on the addition will progress with final concrete pours and underground utilities. Masonry bearing structure will commence.

**Forest Glen Elementary:** Work at Forest Glen will include final site grading in the detention area and final building pad preparation. The initial phase of work at Forest Glen will be substantially complete in preparation for the building addition.

**Churchill Elementary:** Mass grading and underground detention work will continue. Storm detention piping installation will commence and site grading of the playground area will continue.

FQC onsite personnel and office personnel will continue management of ongoing work onsite and coordination of future work items.

## **CONTRACTING/BIDDING**

The next major group of trade packages to be bid will be the building additions for Forest Glen and Churchill. In cooperation with FGM Architects and the District, the prospect of bidding these projects beginning August 4<sup>th</sup>, with bids due August 25<sup>th</sup>, was proposed. The benefit being the delivery of both additions by the start of the 2015 school year versus mid 2015-2016 school year for Churchill. This proposed schedule modification was accepted by the District and the bidding process is underway. These bids will be brought to the Board for review and approval at the September board meetings.

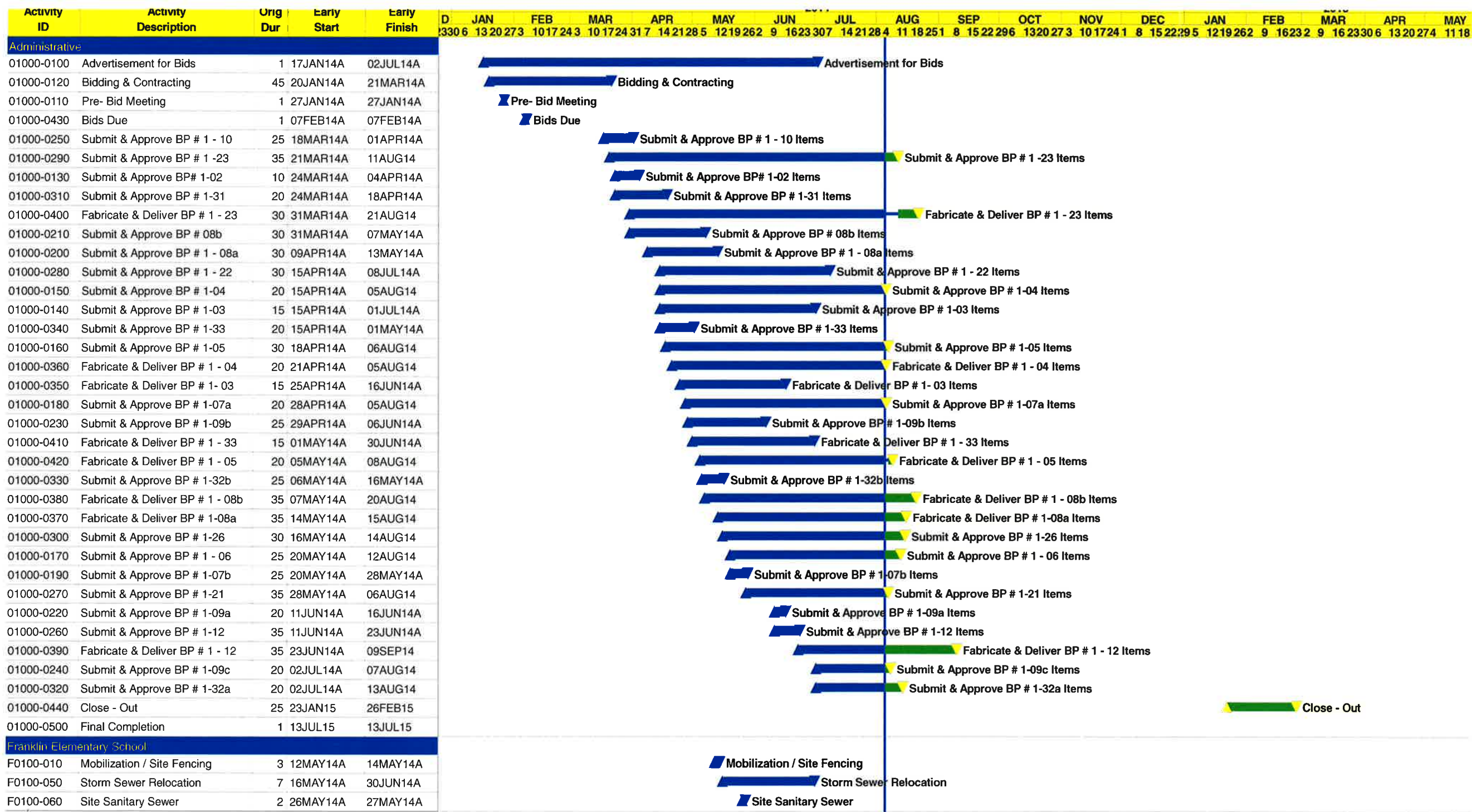
## **PROJECT SCHEDULE/BUDGET**

It was previously reported that the rainy summer had an impact on the project schedule. It slowed progress at Churchill and impacted the overall project schedule at Franklin.

The project schedule at Franklin has been negatively impacted by 5 to 6 days from the original anticipated project schedule. As the work progress moves into masonry, FQC anticipates some or all of this schedule impact will be improved. Over the next 30 days FQC will continue to monitor this situation and attempt to recover some or all of this schedule impact. FQC is implementing a plan to address a second emergency egress path from the existing gym at Franklin, which was a critical path item. We anticipate that the required completion date will be achieved through compression of various trade contractor schedule items. Attached is an updated critical path project schedule.

Costs for the project are within budget and the budget continues to contain contingency funds for unforeseen conditions.





Project Start	26DEC13		Early Bar
Project Finish	13JUL15		Progress Bar
Data Date	05AUG14		Critical Activity
Run Date	05AUG14		

LINC

Sheet 1 of 5

Glen Ellyn S.D. # 41  
 Lincoln - Franklin - Forest Glen  
 Project Schedule Updated 8/5/2014





Activity ID	Activity Description	Orig Dur	Early Start	Early Finish	D	JAN	FEB	MAR	APR	MAY	JUN	JUL	AUG	SEP	OCT	NOV	DEC	JAN	FEB	MAR	APR	MAY			
F0100-070	Excavation for Structures	8	05JUN14A	05AUG14	3306	1320273	1017243	101724317	1421285	1219262	9	1623307	1421284	1118251	8	1522296	1320273	1017241	8	1522295	1219262	9	1623306	1320274	1118
F0100-730	Electrical Rough IN - Building	5	13JUN14A	04JUL14A																					
F0100-520	Fire Protection Express Main	3	18JUN14A	25JUL14A																					
F0100-020	Temporary Partitions / Corridors	4	18JUN14A	23JUN14A																					
F0100-030	MEP Disconnect & Make - Safe	2	18JUN14A	19JUN14A																					
F0100-150	Selective Demolition	5	20JUN14A	02JUL14A																					
F0100-040	West Access Rd.	5	02JUL14A	04AUG14																					
F0100-750	RFI # R10 - Storm Sewer	1	14JUL14A	05AUG14A																					
F0100-090	CIP Concrete Foundations /	10	03JUL14A	06AUG14																					
F0100-110	Foundation Drainage	2	07AUG14	08AUG14																					
F0100-080	Interior Underground Plumbing	4	07AUG14	12AUG14																					
F0100-100	Foundation Waterproofing	4	11AUG14	14AUG14																					
F0100-140	CIP Concrete - Slab on Grade	3	13AUG14	15AUG14																					
F0100-120	Foundation Backfill	2	15AUG14	18AUG14																					
F0100-200	Masonry Bearing South Wall of	5	19AUG14	25AUG14																					
F0100-640	Asphalt Paving - Phase I	4	19AUG14	22AUG14																					
F0100-380	Hollow Metal Door / Borrowed	4	20AUG14	25AUG14																					
F0100-210	Masonry Bearing - North Wall of	5	26AUG14	01SEP14																					
F0100-660	Electrical Rough IN - Conduit	26	26AUG14	30SEP14																					
F0100-220	Masonry Bearing & Veneer North	5	04AUG14A	05SEP14																					
F0100-230	Masonry Bearing - North Wall of	8	08SEP14	17SEP14																					
F0100-300	Masonry Bearing & Veneer West	8	08SEP14	17SEP14																					
F0100-180	Site Concrete - North Courtyard	3	08SEP14	10SEP14																					
F0100-240	Masonry Bearing - East Wall	7	30JUL14A	04AUG14A																					
F0100-260	Masonry Bearing & Veneer Rms	8	18SEP14	29SEP14																					
F0100-250	Masonry Bearing - South Wall -	5	18SEP14	24SEP14																					
F0100-190	Site Concrete - South Courtyard	4	30SEP14	03OCT14																					
F0100-670	Electrical Rough IN - Wiring	15	01OCT14	21OCT14																					
F0100-270	Structural Steel Floor / Roof	7	30SEP14	08OCT14																					
F0100-130	CIP Concrete - Courtyard Stairs	1	06OCT14	06OCT14																					
F0100-280	Floor / & Roof Decking	4	09OCT14	14OCT14																					
F0100-170	CIP Concrete - Slab on Metal	1	09OCT14	09OCT14																					
F0100-460	Plumbing Rough IN - Roof	5	15OCT14	21OCT14																					
F0100-290	Roof Curbs & Roof Blocking	4	15OCT14	20OCT14																					
F0100-160	CIP Concrete - Interior Stairs	3	15OCT14	17OCT14																					
F0100-590	Misc. Metal Stair Railings	5	20OCT14	24OCT14																					
F0100-320	Modified Roofing System	7	22OCT14	30OCT14																					
F0100-330	Roof Related Sheet Metal	8	31OCT14	11NOV14																					
F0100-390	HVAC Sheet Metal Rough IN -	3	31OCT14	04NOV14																					
F0100-360	Aluminum Curtain Wall - South	5	31OCT14	06NOV14																					
F0100-340	Aluminum Curtain Wall - North	4	31OCT14	05NOV14																					

Project Start	26DEC13		Early Bar	LINC
Project Finish	13JUL15		Progress Bar	
Data Date	05AUG14		Critical Activity	
Run Date	05AUG14			

Glen Ellyn S.D. # 41  
 Lincoln - Franklin - Forest Glen  
 Project Schedule Updated 8/5/2014



Activity ID	Activity Description	Orig Dur	Early Start	Early Finish	D	JAN	FEB	MAR	APR	MAY	JUN	JUL	AUG	SEP	OCT	NOV	DEC	JAN	FEB	MAR	APR	MAY	
F0100-310	Pre-Fabricated Skylights	3	31OCT14	04NOV14																			
F0100-350	Aluminum Storefront - West	2	31OCT14	03NOV14																			
F0100-410	HVAC Sheet Metal Rough IN -	2	31OCT14	03NOV14																			
F0100-400	HVAC Sheet Metal Rough IN	10	05NOV14	18NOV14																			
F0100-720	Electrical Trim - Power for	4	05NOV14	10NOV14																			
F0100-470	Plumbing Rough IN - Waste,	5	11NOV14	17NOV14																			
F0100-500	Gypsum Board Soffits / Ceilings	7	12NOV14	20NOV14																			
F0100-530	Fire Protection Rough IN	8	19NOV14	28NOV14																			
F0100-430	HVAC Rough IN - TC	8	19NOV14	28NOV14																			
F0100-620	Interior Painting	10	21NOV14	04DEC14																			
F0100-680	Electrical Trim - Lighting	8	27NOV14	08DEC14																			
F0100-440	HVAC Trim - TC	5	01DEC14	05DEC14																			
F0100-550	Acoustical Ceiling Grid	7	05DEC14	15DEC14																			
F0100-510	Classroom Casework	6	05DEC14	12DEC14																			
F0100-690	Electrical Trim - Power	6	05DEC14	12DEC14																			
F0100-580	Misc. Interior Glazing	3	05DEC14	09DEC14																			
F0100-420	HVAC Sheet Metal Trim	6	09DEC14	16DEC14																			
F0100-480	Plumbing Fixture Trim	5	15DEC14	19DEC14																			
F0100-540	Fire Protection Trim	5	16DEC14	22DEC14																			
F0100-630	Corridor Storage Cubbies	5	16DEC14	22DEC14																			
F0100-710	Electrical Trim - Low Voltage	6	16DEC14	23DEC14																			
F0100-700	Electrical Trim - FA	4	16DEC14	19DEC14																			
F0100-490	Resilient Flooring & Accessories	8	23DEC14	01JAN15																			
F0100-560	Acoustical Ceiling Tile	10	23DEC14	05JAN15																			
F0100-370	Aluminum Entrances Rm C301,	3	23DEC14	25DEC14																			
F0100-570	Interior Doors & Finish Hardware	5	02JAN15	08JAN15																			
F0100-600	Operable Partitions	4	02JAN15	07JAN15																			
F0100-610	Visual Display Boards	2	02JAN15	05JAN15																			
F0100-450	HVAC Test & Balance	3	06JAN15	08JAN15																			
01000-0480	Substantial Completion	1	09JAN15	09JAN15																			
01000-0490	Punchlist	9	12JAN15	22JAN15																			
F0100-740	Asphalt Paving - Phase II	5	25JUN15	01JUL15																			
F0100-650	Landscape Restoration	7	02JUL15	10JUL15																			

**Lincoln Elementary School**

L0100-010	Mobilization / Site Fencing	2	06JUN14A	09JUN14A																			
L0100-400	Disconnect / Relocate Mobil	10	06JUN14A	19JUN14A																			
L0100-050	MEP Disconnect & Make - Safe	2	10JUN14A	11JUN14A																			
L0100-020	Site Demolition	4	10JUL14A	14JUL14A																			
L0100-030	Selective Demolition	5	19JUN14A	02JUL14A																			
L0100-450	HVAC Rough IN - HWS / HWR	8	02JUL14A	04AUG14A																			
L0100-040	Temporary Partitions / Corridors	10	02JUL14A	04AUG14A																			

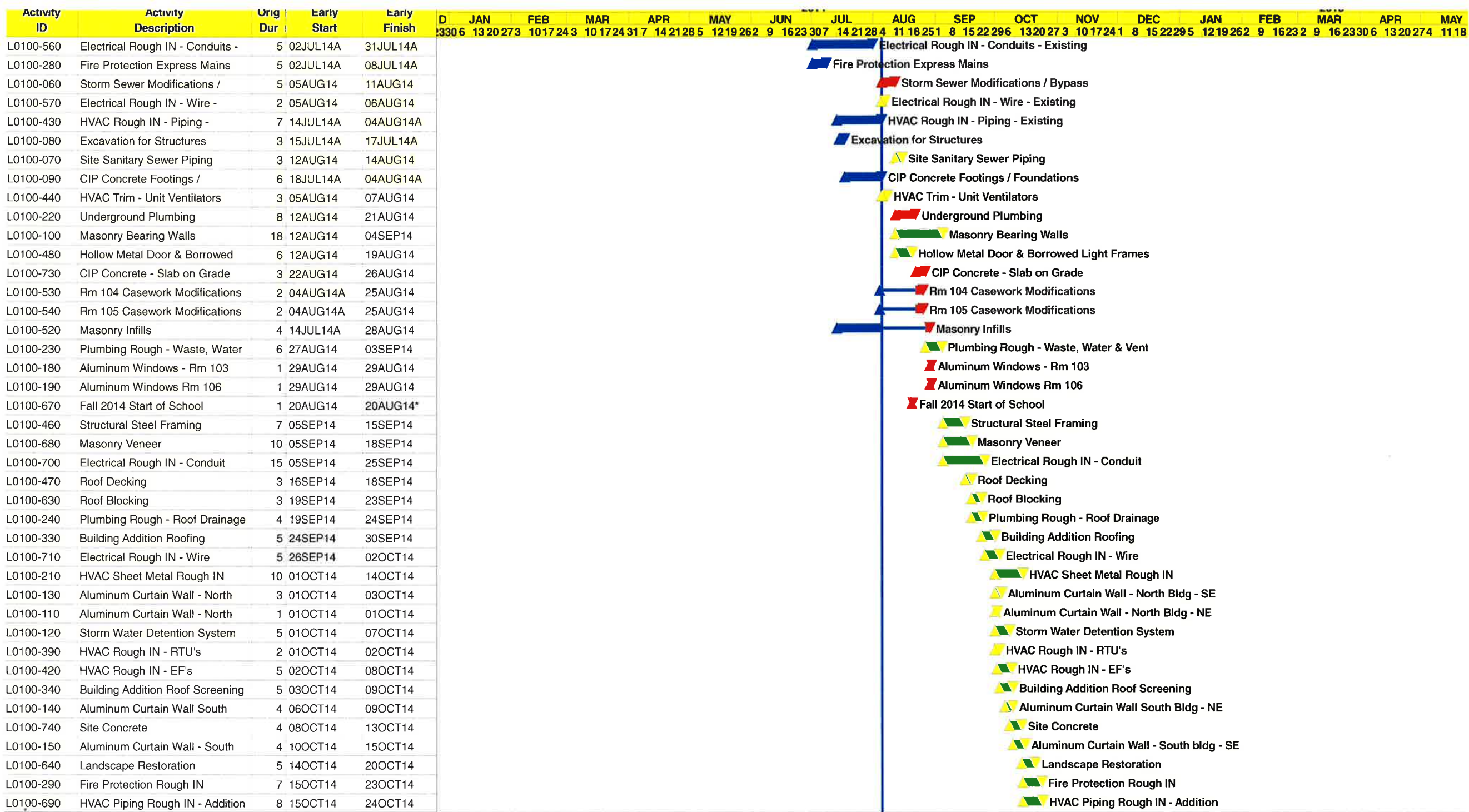
- Mobilization / Site Fencing
- Disconnect / Relocate Mobil Classrooms
- MEP Disconnect & Make - Safe
- Site Demolition
- Selective Demolition
- HVAC Rough IN - HWS / HWR Piping
- Temporary Partitions / Corridors

Project Start	26DEC13		Early Bar
Project Finish	13JUL15		Progress Bar
Data Date	05AUG14		Critical Activity
Run Date	05AUG14		

LINC

Sheet 3 of 5

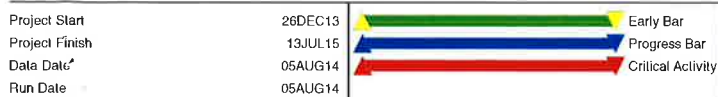




Project Start	26DEC13		Early Bar
Project Finish	13JUL15		Progress Bar
Data Date	05AUG14		Critical Activity
Run Date	05AUG14		

LINC





LINC

Sheet 5 of 5

